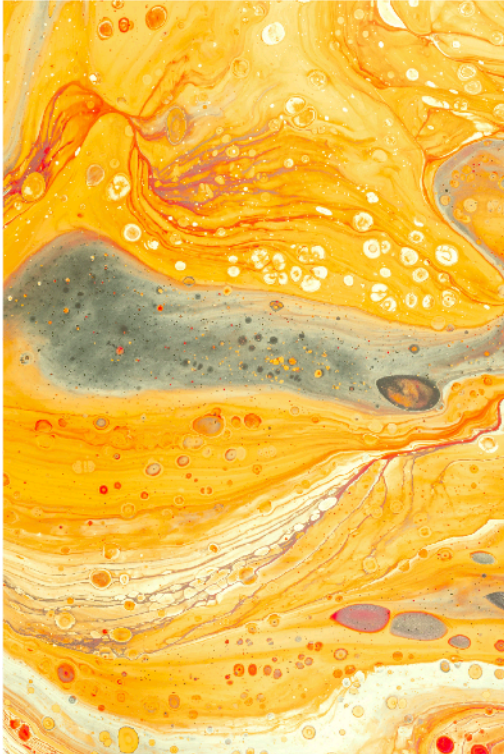


# Urine



## Shipping requirements

**Specimen:** urine samples

**Volume:** > 300  $\mu$ L

**Conservation:** samples frozen at  $-80^{\circ}\text{C}$

# Metabolomics Services

## Metabolomic Platform

### Advanced technology

Nuclear Magnetic Resonance (NMR) is a valuable tool for studying the metabolic profile of an individual.

### Robust and reproducible results

Results are reported in quantitative values and can be compared with different studies over time.

### Quick analysis

Fully automated technology platform providing rapid analysis of up to 200 samples in one day.

## The added value we offer

### Quality results

Biosfer Teslab is ISO 9001 and ISO 13485 certified and CE marked for characterizing blood lipoproteins.

### Experience

Our research team will help you to interpret your data. We are closely involved in every project.

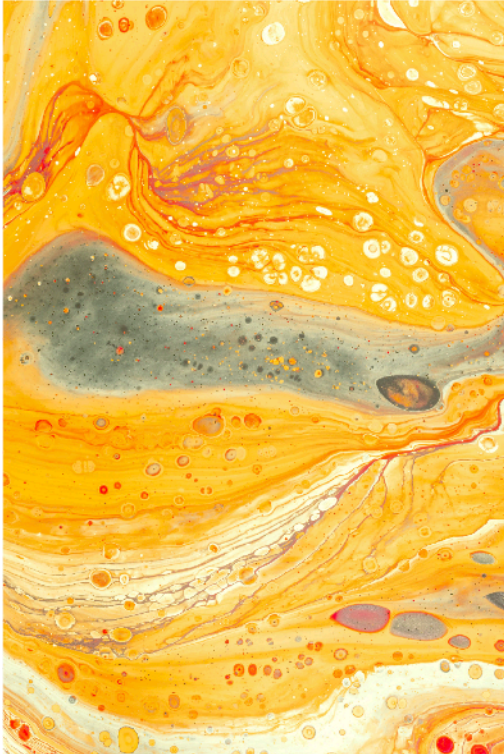
### Data analysis

We have population databases that can be used to compare normality values. We participate in the creation of figures.

## Applications

- Identification of biomarkers
- Epidemiological studies
- Pharmacological studies
- Nutritional studies
- Disease prediction and prevention
- Disease diagnosis
- Clinical trials

# Urine



## Low molecular weight metabolites \*

### Renal function

Creatine  
Creatinine  
Urea

### Amino acids

Alanine  
Glutamine  
Glycine  
Histidine  
Isoleucine  
Leucine  
Lysine  
Taurine  
Threonin  
Valine

### Microbial Metabolism

Dimethylamine  
TMAO

### Glucose Metabolism \*

Citrate  
Glucose  
Lactate  
Succinate

### Diet Metabolism \*

Arabinose  
Betaine  
Mannitol  
3-Methylhistidine

### Ketone bodies

Acetate

### Phenylalanine metabolism

Hippurate

### Pyrimidine metabolism

3-Aminoisobutyric acid

### Nicotinamide metabolism

Trigonelline  
1-Methylnicotinamide

### Others \*

Allantoin  
Carnitine  
Ethanolamine  
Formate  
Glycolate  
Hypoxanthine  
Indoxyl sulfate  
Isocaproate  
Isovalerate  
Trans-aconitate  
2-Hydroxyisobutyrate  
3-Hydroxyisobutyrate  
3-Hydroxyisovalerate

## Shipping requirements

**Specimen:** urine samples

**Volume:** > 300 µL

**Conservation:** samples frozen at -80°C

\* The presence of some metabolites in urine samples can vary according to the person and the animal model, and some metabolites not present in the list may be analyzed or vice versa.